

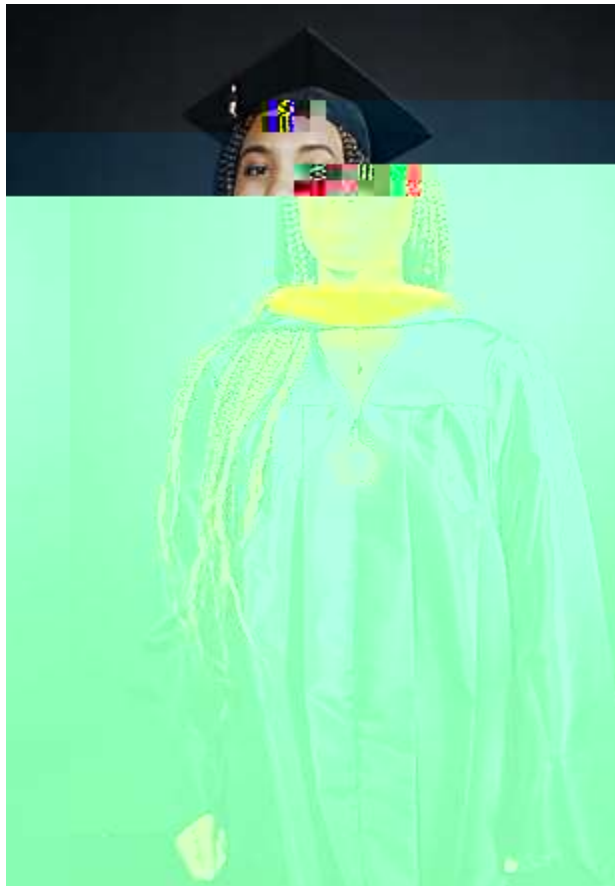
Tips to Put On Your Graduation Regalia the Right Way

Here are a few tips to help you dress the part for Commencement, including how the hood is supposed to look.

1. Adjust the gown so that it sits comfortably on your shoulders. It should fall below your knee, but not so low that it is a tripping hazard.

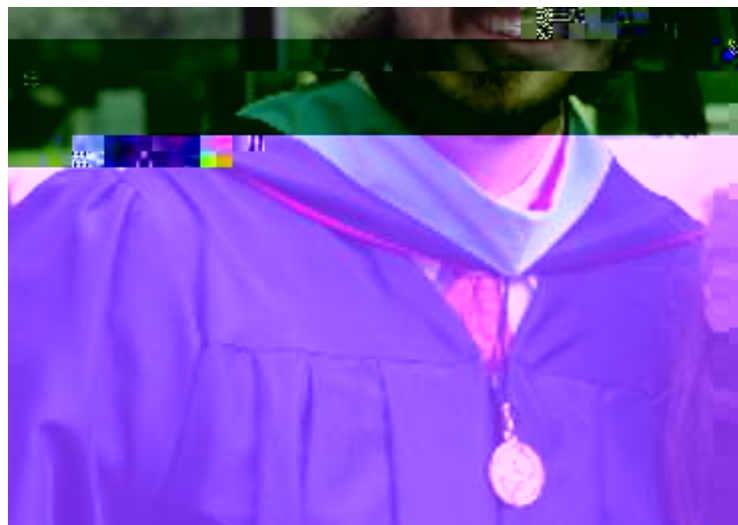


2. Put the hood on over your head with the velvet side up and the small tapered end in front. Drape your hood around your neck with the largest portion of the hood hanging down your back.



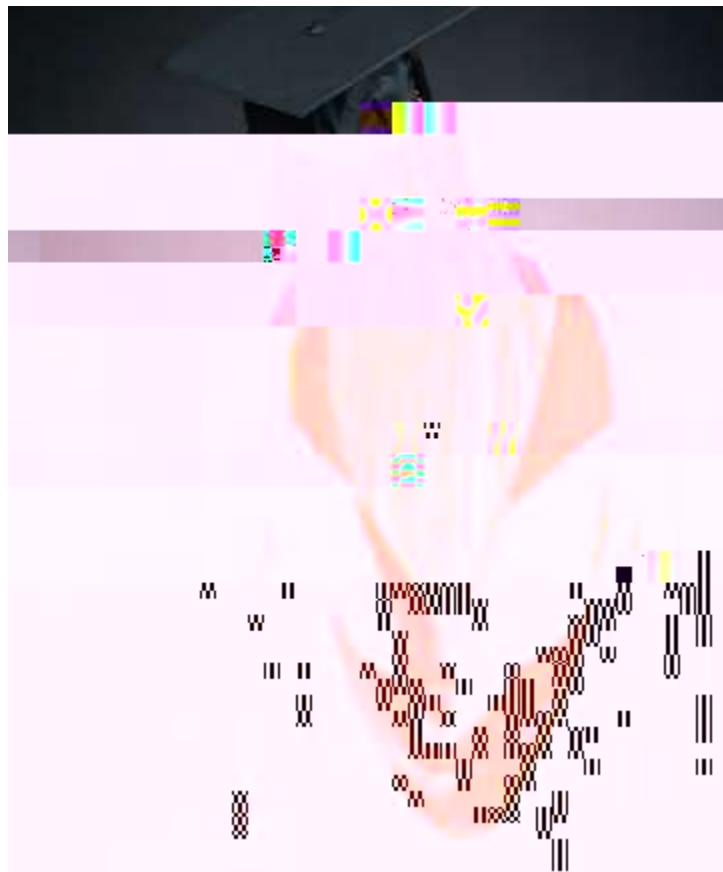
3. Secure the hood so it doesn't slip off.

Use the cord on the front to secure the hood to a shirt button or use a safety pin to attach it to a blouse or dress. This will also give you a little breathing room so the hood isn't tight against your neck. Fasten all hooks, buttons and zippers securely.



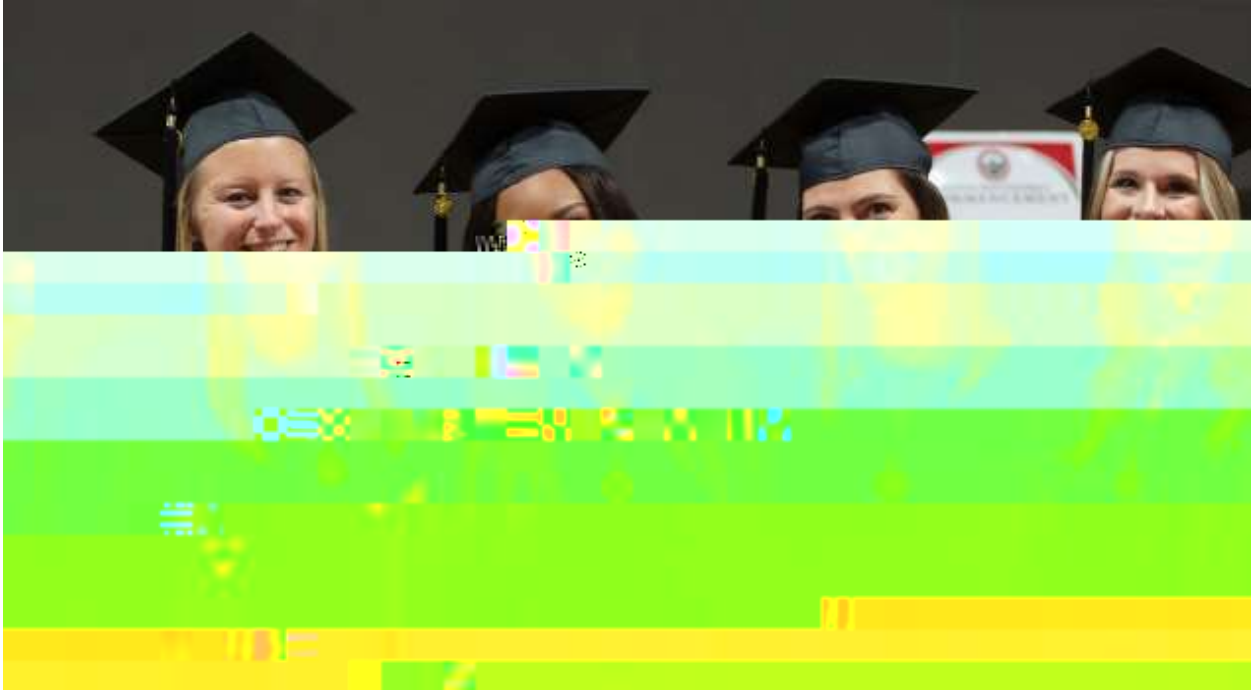
4. Let your colors show.

Turn your discipline colors outward to show the colors. Roll the velvet edge out to fully show the colors. When you are done, the end of the hood will look somewhat like a fin. You may need to ask for someone to give you a hand to ensure the cord and button in the back are attached.



5. Place the cap on your head so that the point is lined up with the middle of your forehead.

From above, it will look like a diamond shape. (The inside of the cap tells you which end is the front.) Adjust the mortarboard so that it is parallel to the ground – don't wear it to the side or to the back. You may need to use bobby pins or clips to secure it to on your head.



6. Fasten your tassel to the button on the top of the mortarboard.
The tassel lays to the right side. Once your degree is conferred, you will be instructed to move it to the left side.

Congratulations, graduates!! It is now time to blaze those trails.

